

LA300 – Float Level Transmitter



- ▶ Low cost
- ▶ No impact on measuring from container inner pressure
- ▶ Multiple outputs selectable
- ▶ 3 electrical connectors selectable
- ▶ Easy to use, applicable to various medium
- ▶ Stainless steel wetted parts
- ▶ Measuring range up to 4m



With liquid level fluctuation, a magnetic float triggers the switch inside tube, which changes the number of connected resistors. This changing of resistance is converted to standard electrical signal output. All-metal housing, LED display, Dual keys design and user friendly menu, various process connections, 330° rotatable indicator.

Specifications

Measuring Range (Rod length)	250mm/ 500mm/ 750mm/1000mm/1500mm 2000mm/3000mm/4000mm/ others customizable
Applicable Medium	Corrosive liquids compatible with 304(316/PTFE) stainless steel
Resolution	For details please see 'technical data'
Pressure Rating	20bar
Medium Density	≥0.7g/cm ³
Power Supply	10...36Vdc
Current Consumption	
2-wire	Same as current output (4...20mA)
3-wire	≤22mA
2-wire Current Analog Output	
Output	2-wire 4...20mA
Load RA(Ω)	RA≤(Us-10)V/0.02A
Linearity	≤±1.5% of F.S.
3-wire Current Analog Output	
Output	3-wire 4...20mA, 0...20mA
Load RA(Ω)	RA≤(Us-3)V/0.02A
Linearity	≤±1.5% of F.S.
Voltage Analog Output	
Output	3-wire 0...5V,1...5V
Load RA(Ω)	RA≥5K
Linearity	≤±1.5% of F.S.
Wiring Protection	Reverse polarity
Temperature	
Ambient	-40...85°C
Medium	-40...85°C
Storage	-40...85°C
Material	
Housing	304 stainless steel
Process Connection	304 stainless steel(optional 316stainless steel/PVDF)
Float and Rod	304 stainless steel(optional 316stainless steel/PVDF)
Protection Class	IP67
Electrical Connection	M12×1 plug / solenoid plug (for CSA head); terminals(for RAL head)

Applications

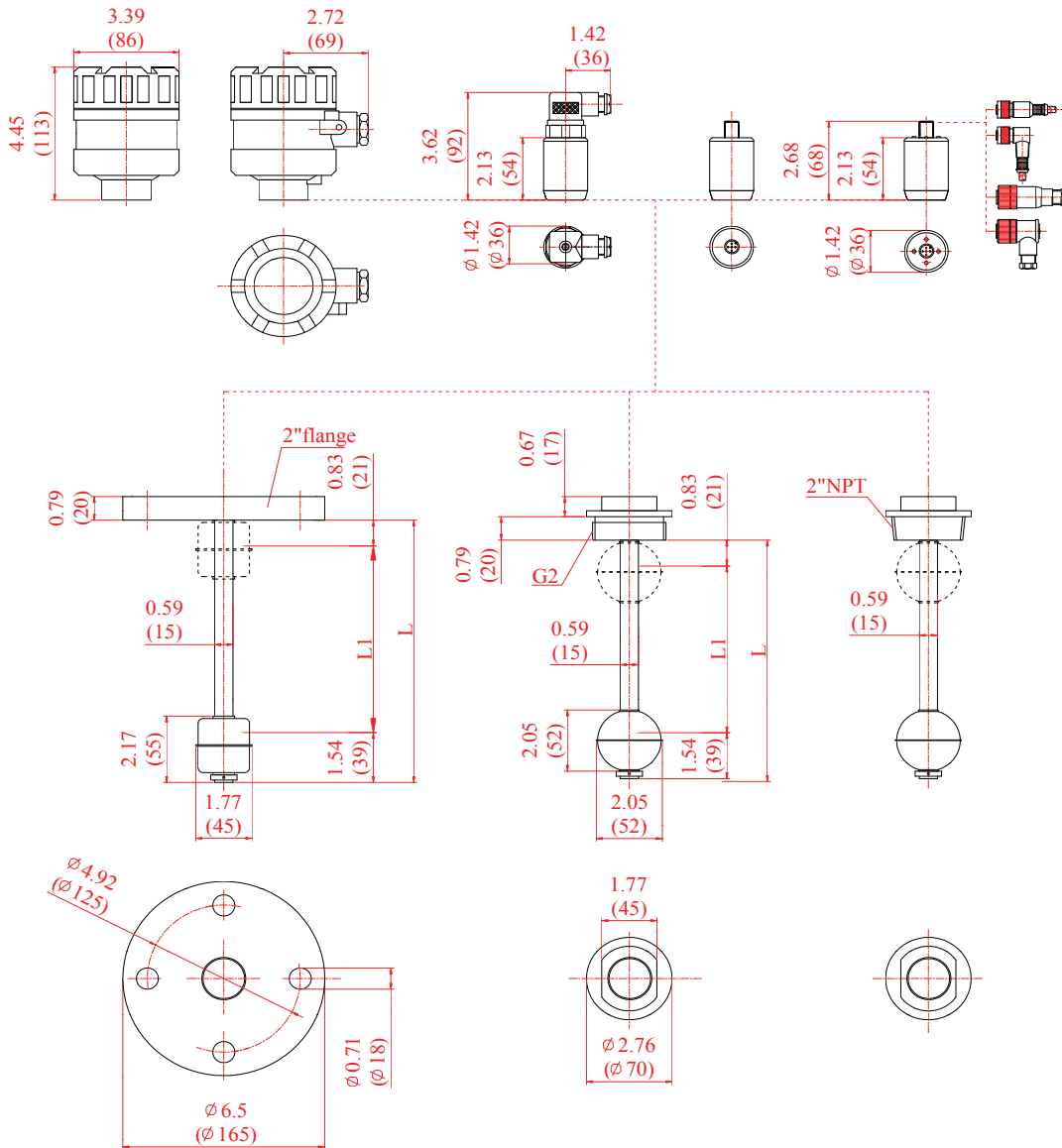
- ▶ Food/pharmaceutical industry
- ▶ Power plant
- ▶ Petrochemical
- ▶ Water treatment
- ▶ Boiler
- ▶ Papermaking

LEVEL

Technical Data

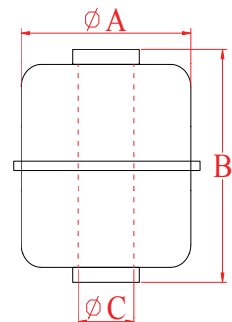
Rod Length L (mm)	250	500	750	1000	1500	2000
Valid Range L1(mm)	190	440	690	940	1440	1940
Resolution(mm)	8	8	8	15	15	15

Dimensions in inches (mm)

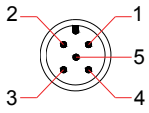
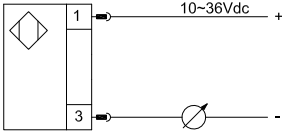
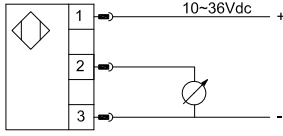
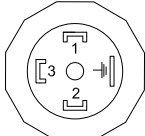
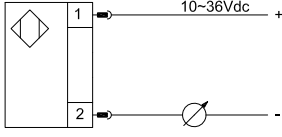
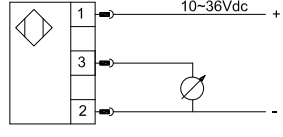
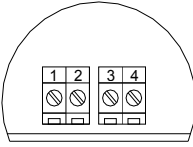
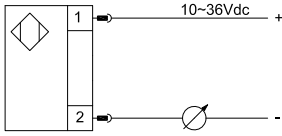
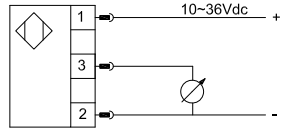


Optional Floaters

Size	Model I	Model II	Model III
A(inch/mm)	1.65 / (42)	2 / (51)	2.05 / (52)
B(inch/mm)	1.97 / (50)	2.44 / (62)	2.76 / (70)
C(inch/mm)	0.61 / (15.5)	0.61 / (15.5)	0.71 / (18)



Wiring

Wiring	2-wire	3-wire												
 <table border="1"> <thead> <tr> <th>Signal</th> <th>Plug</th> <th>Cable</th> </tr> </thead> <tbody> <tr> <td>U+</td> <td>1</td> <td>Brown</td> </tr> <tr> <td>output*</td> <td>2*</td> <td>White*</td> </tr> <tr> <td>U-</td> <td>3</td> <td>Blue</td> </tr> </tbody> </table> <p>M12x1 plug * Only for 3-wire</p>	Signal	Plug	Cable	U+	1	Brown	output*	2*	White*	U-	3	Blue		
Signal	Plug	Cable												
U+	1	Brown												
output*	2*	White*												
U-	3	Blue												
 <table border="1"> <thead> <tr> <th>Signal</th> <th>Plug</th> </tr> </thead> <tbody> <tr> <td>U+</td> <td>1</td> </tr> <tr> <td>output*</td> <td>3*</td> </tr> <tr> <td>U-</td> <td>2</td> </tr> </tbody> </table> <p>Solenoid plug * Only for 3-wire</p>	Signal	Plug	U+	1	output*	3*	U-	2						
Signal	Plug													
U+	1													
output*	3*													
U-	2													
 <table border="1"> <thead> <tr> <th>Signal</th> <th>Plug</th> </tr> </thead> <tbody> <tr> <td>U+</td> <td>1</td> </tr> <tr> <td>output*</td> <td>3*</td> </tr> <tr> <td>U-</td> <td>2</td> </tr> </tbody> </table> <p>Terminals * Only for 3-wire</p>	Signal	Plug	U+	1	output*	3*	U-	2						
Signal	Plug													
U+	1													
output*	3*													
U-	2													

Order Code

LA :	Float level transmitter
300 :	Series#
24 :	2-wire 4...20mA
34 :	3-wire 4...20mA
35 :	3-wire 0...20mA
30 :	3-wire 0...5V
31 :	3-wire 1...5V
F :	Flange connection
G :	G2 male thread
N :	2"NPT male thread

LA	300/	24	F	R	M1000	S
-----------	-------------	-----------	----------	----------	--------------	----------

S :	M12X1 plug (only for CSA electrical head)
H :	Solenoid plug (only for CSA electrical head)
R :	Terminals (only for RAL electrical head)
MXXXX :	Rod length(metric system) L=xxxx mm
IXXXX :	Rod length(english system) L=xxxx inch
Note : M1000 means that the rob length is1000mm with the valid range 940mm.	
Float shape	
S :	Ball
C :	Cylinder

Sepecial Order on Request

- ▶ Electrical and / or process connection
- ▶ Float material/size
- ▶ Rod material/length